



ATS Situation of Thailand



ATS in Thailand

- * Ice
- * Methamphetamine tablet (Yaba) and Pseudo Ephedrine
- * Ecstasy

Aspects of the ATS

- * Chemical (supply, supplement)
- * Production management (producer, site, separation of production stage)
- * Product (purity, component, tool mark, logo, packaging)
- * Trafficking (route, trafficker)
- * Abuse (user group, area, volume)
- * Other factors (international trend, oversea market, new drug)
- * Over all trend

Major trafficking in routes

- Methamphetamine and Heroin from the Golden triangle directly by land and sea and via Lao PDR and Cambodia

- Marihuana from Lao PDR

- Ecstasy and Ketamine from Malaysia

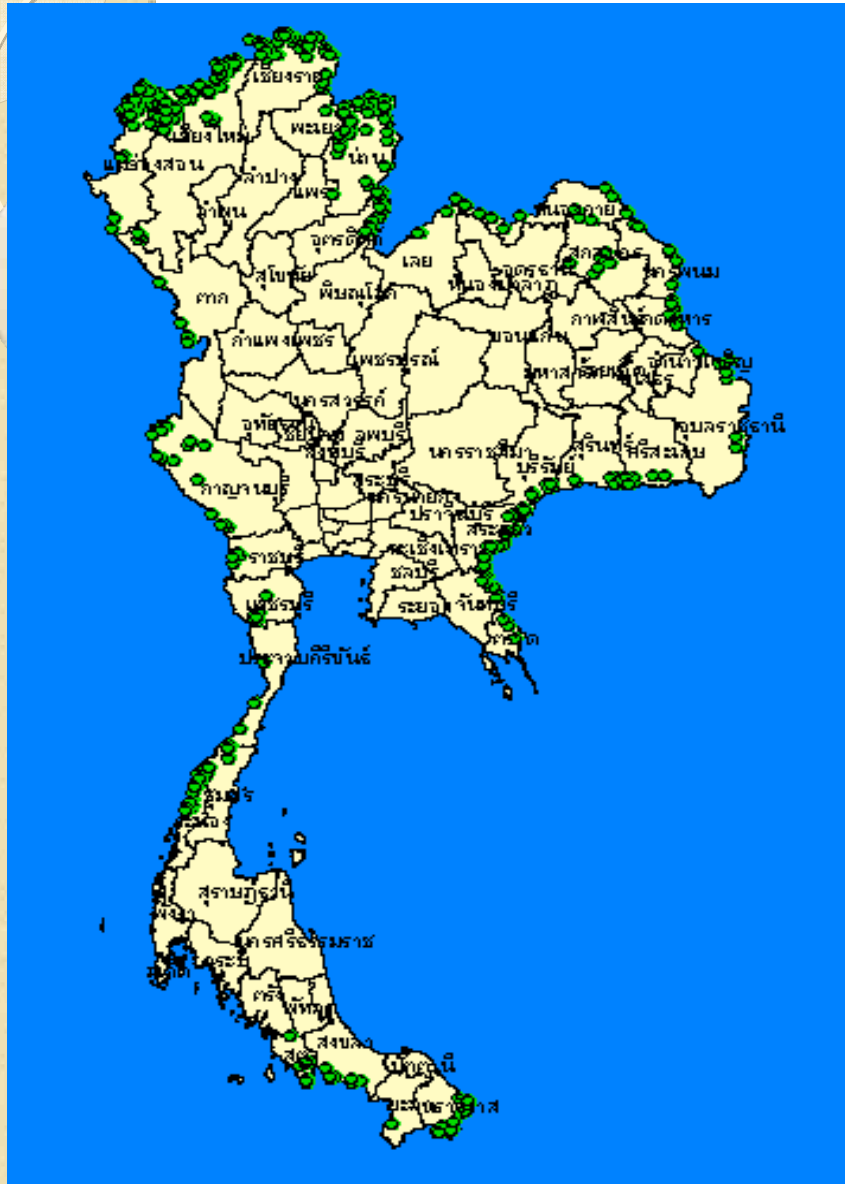
Major trafficking out and transit

- Ice and Heroin by land and sea to Malaysia, Hong Kong, Japan etc.

- Marihuana by land to Malaysia.

- Marihuana raisin by air to Japan (very little).





- Check point and natural pass from Srisakhet - Trat Province.
- Chong Sangam Checkpoint (Srisakhet)
- Klongluk-Poipet (Sakaew)
- Bungtakuan-Obaijuen (Sakaew)
- Ban laem-Ban Pakkard (Chantaburi)
- Chong Jom Checkpoint (Chantaburi)
- Ban Hatlek Checkpoint (Trat)
- Boat pier in Klongyai and Laem Yob District (Trat)

Drug trafficking in the northern border of Thailand

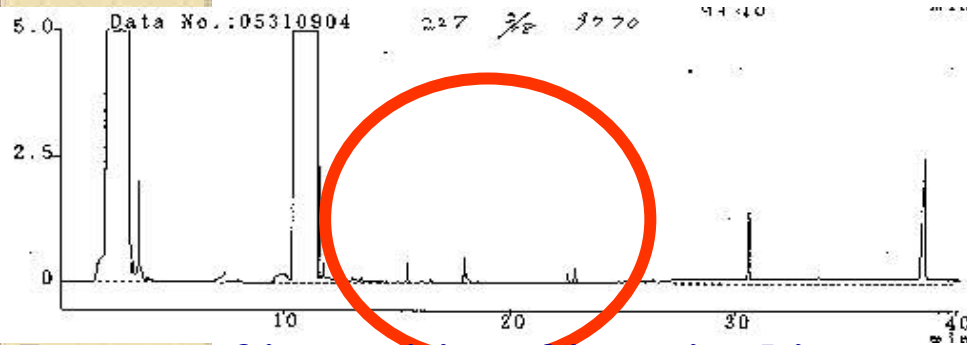
- The north is still the major trafficking area especially the Mae Sai District, Chiang Rai Province.
- Drug trafficking methods are varied from body wrapping, swallow, conceal in shoes, in the car or with other goods.
- Several nationalities have also been traffickers ice and other drug such as Taiwanese, Hong Kong Chinese, Singaporean, Malaysian, Nepalese and Kazakhstani.
- Ice is also trafficked into Thailand from production area via Lao PDR.

Ice situation

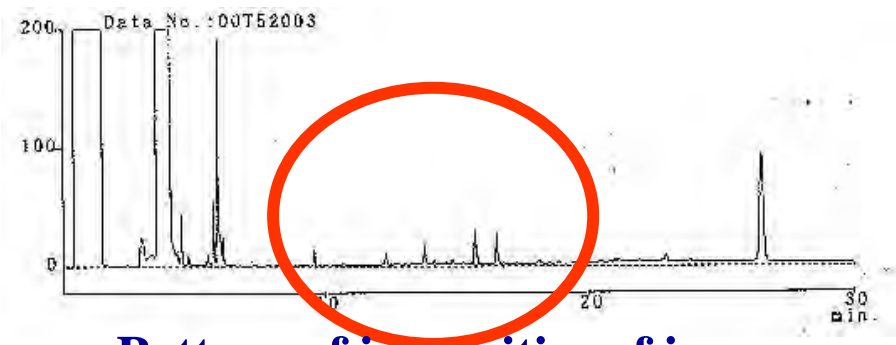
- Minority groups in the Golden Triangle Area can produce very high quality ice. Purity of ice seized in 2001 in Chiang Rai Province was higher than the Japanese pharmaceutical grade.
- In the past 2-3 years, more ICE has been continuously trafficked from the Golden Triangle Area to Thailand for further trafficking to other countries. International syndicates traffic ice to their countries. Some foreign traffickers went to the border area by themselves.



The next goal has to be Impurity Profiling of ice

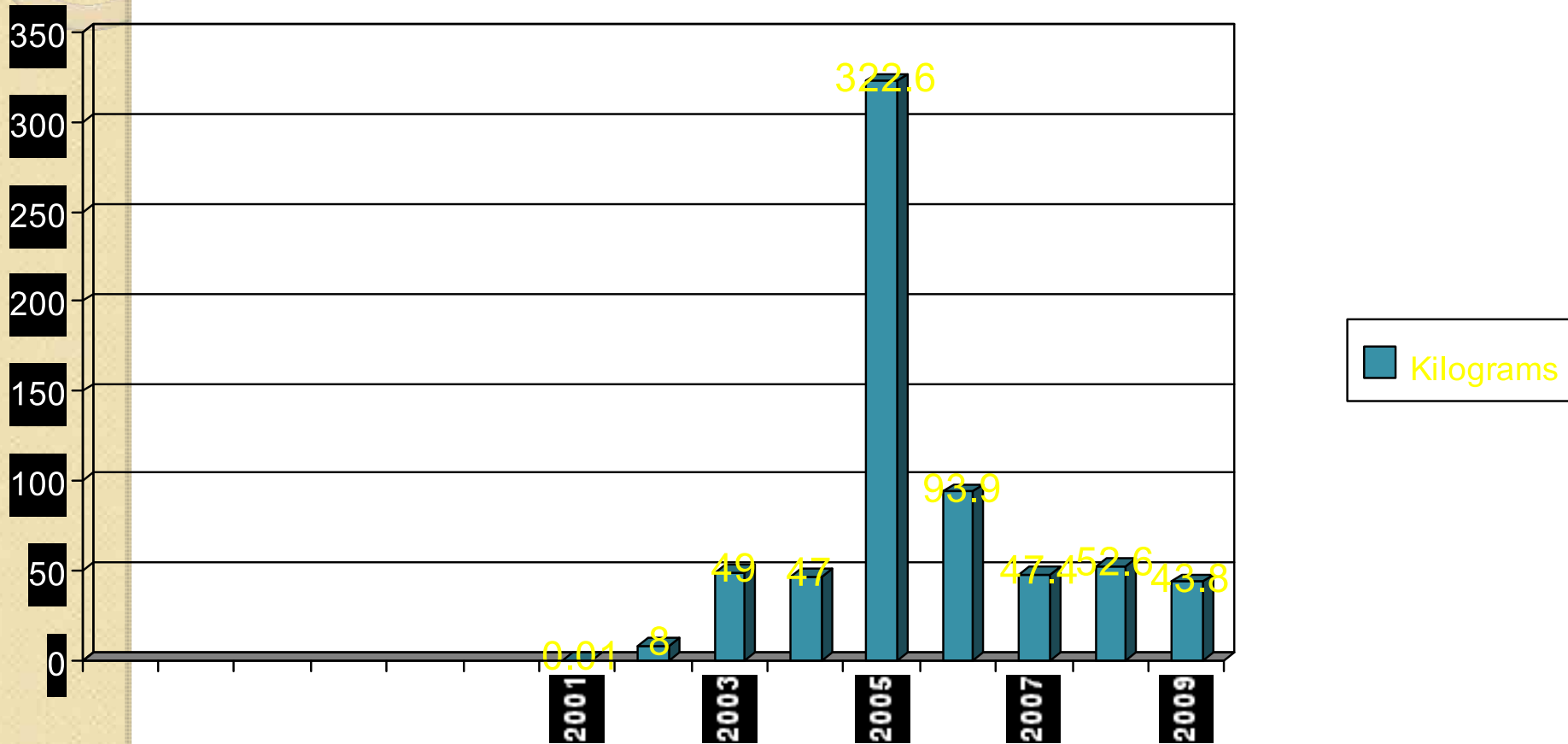


Pattern of impurities of ice seized in Golden Triangle



Pattern of impurities of ice seized in Japan

Statistic of ICE Seizures 2001 – 29 July 09



Trend of ice situation

- * More production and trafficking of ice from The Golden Triangle to the world market. Production in Asia Pacific may shift the production to The Golden Triangle due to preferable circumstances of lack of authority control, easy access to the chemical and need of minorities to generate money for group survival.
- * Ice seizure in Thailand and Myanmar is increasing continuously. Ice had been trafficked with heroin by big heroin trafficking syndicate. They have the domestic and international connection.
- * Certain possibility that ecstasy addicts in the region may turn to ice as smoking produce faster effect.
- * Recognition new appearance of ice and ecstasy is essential.

Continuous ice seizure

Seizure of ice on 24 January 2005 in Myanmar,
Joint investigation between ONCB and the Myanmar CCDAC led to arrest of 2 Taiwanesees and several Myanmar offender and seizure of 178 kgs. of ice in Yangon, Myanmar

Seizure of ice on 30 January 2005, Bangkok
Metropolitan Police arrested 2 Cambodian offenders with 100 grams of ice, 2,000 Methamphetamine Tablets and 20 bottles of Ketamine in Sakaew Province next to Cambodian border.

Seizure of ice on 24 February 2005, Border Patrol Police arrested a Thai offender and a Malaysian offender with 93 grams of ice at Betong Border Checkpoint in Yala Province. The offender were travelling from Malaysia to Thailand.

Seizure of ice on 3 May 2005, CIB, Royal Thai Police arrested a Thai offender with 1 kg. of ice in Bangkok.

Seizure of ice on 10 May 2005, PNSB arrested 5 Thai offenders with 2 kgs. of ice concealed in a car in Chiang Rai Province.



On 16 June 2005, Highway Patrol Police arrested 2 offenders with 148 kgs of ice and 86.8 kgs of heroin on the highway in Saraburi Province. The shipment was trafficked from the production area to Thailand via Lao PDR.



Seizure of ICE on 24 June 2005, PNSB and Chiang Rai provincial police arrested 2 Thais with 53.5 kgs. of heroin and 54.6 kgs. of ICE in Chiang Rai Province. Afterward on 27 June 2005, PNSB arrested 2 Thai and 2 Malaysian offenders in Songkla Province.

Seizure of ice on 3 July 2005

- **ONCB and Royal Thai Army arrested 2 Malaysian offenders with 54 kgs. of ice concealed in a car in Had Yai District, Songkla Province.**
- **The trafficking syndicate trafficked ice from the north of Thailand to Malaysia**





16 May 2005, Thai-Japan joint cooperation resulted in the arrest 6 Japanese at Kansai airport, Japan from BKK The drug was 13 kg of ICE concealed in chocolate boxes

Ice production in Thailand



kitchen lab in Patumthani Province (next to Bangkok)

18 July 2008, seizure of 0.5 gram of ice, 5 bottles of Toluene, 4 bottles of Acetone, 1 bottle of Iodine and small amount of red Phosphorus.





Pseudo Eph.



Toluene



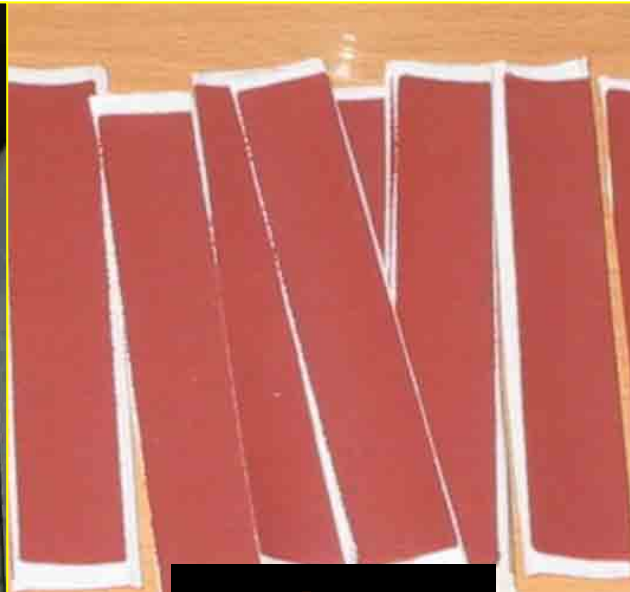
Iodine



Acetone



Alcohol



Red Pho.



Chemicals and Equipment



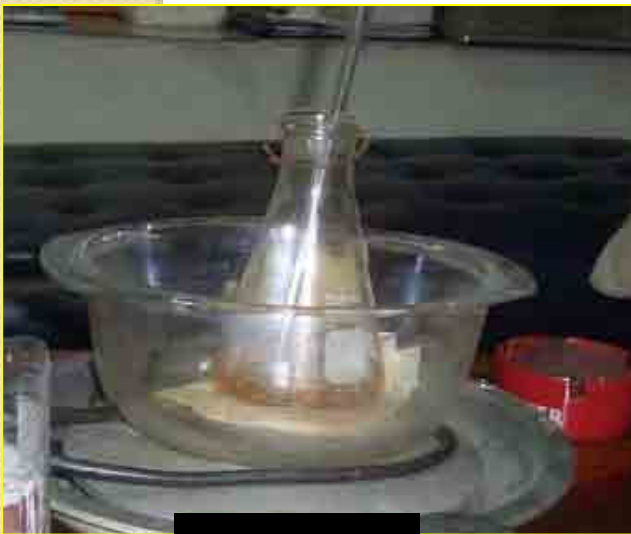
Scale



Electric heater



Bottle



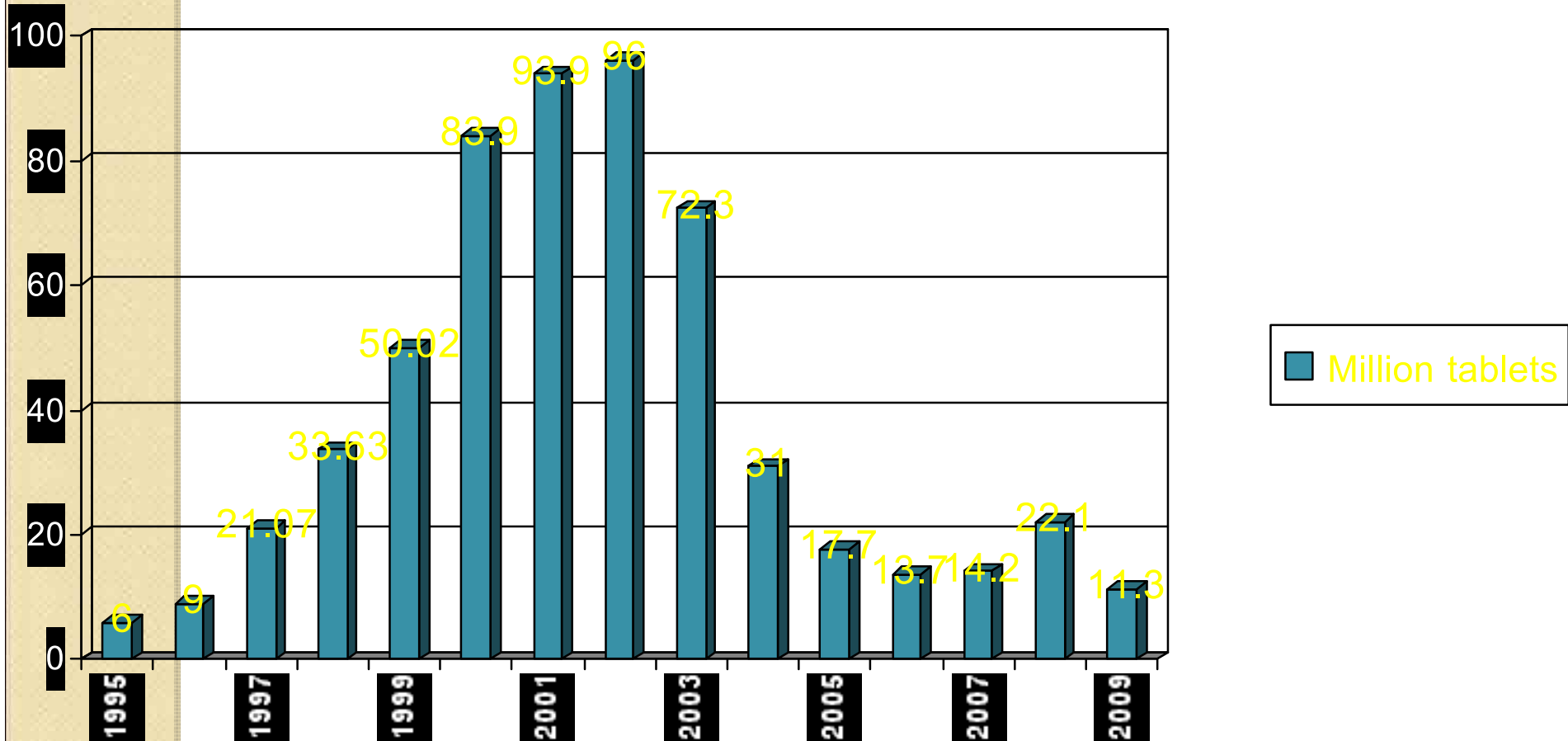
Boiler



Toluene (Upper layer)

Statistic of Methamphetamine tablet Seizures 1995 – 29 July 09

Retail price of Yaba is 250-300 baht/pill (7-9 USD)

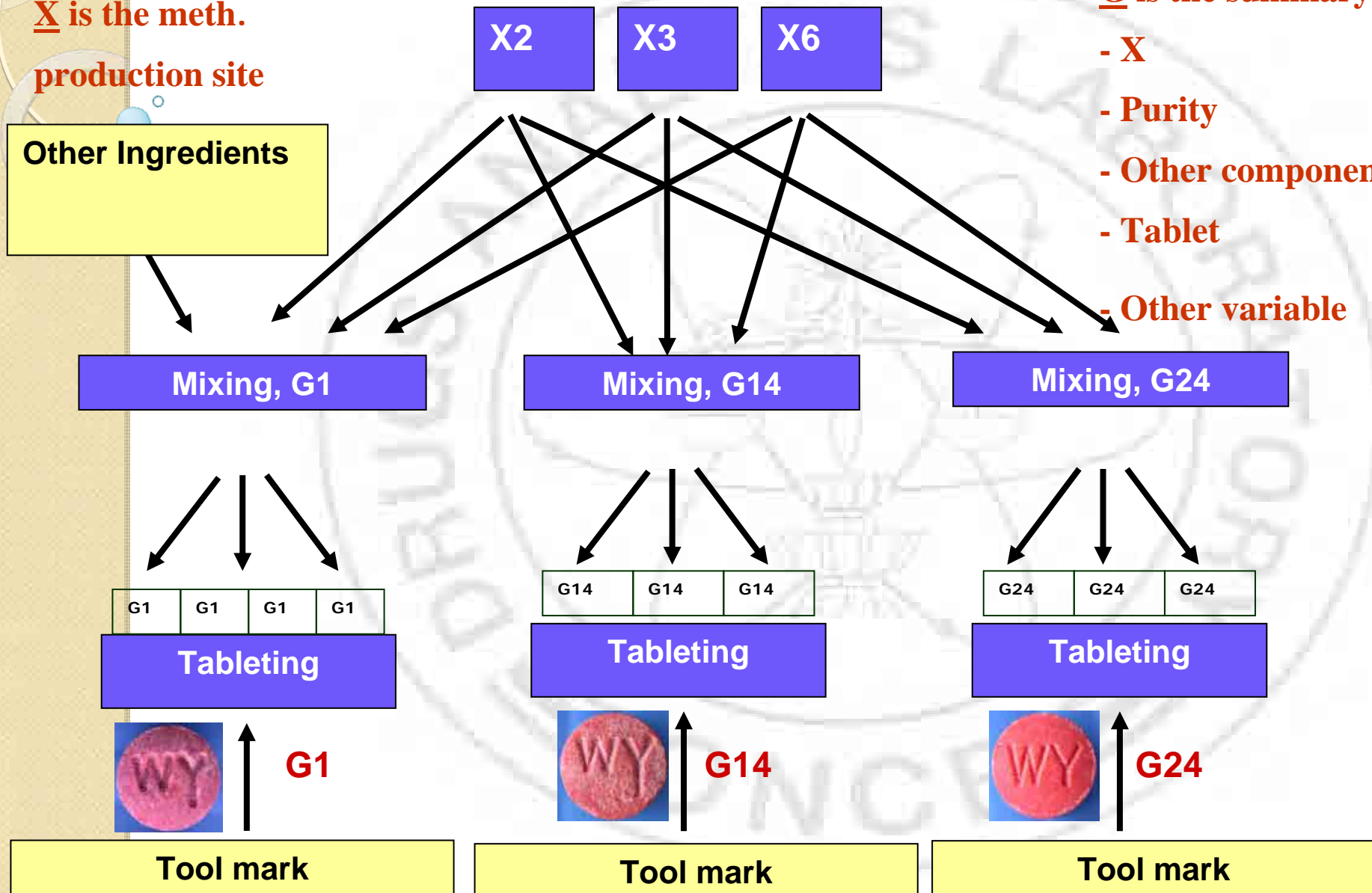


Methamphetamine tablet grouping

X is the meth.
production site

G is the summary of

- X
- Purity
- Other component
- Tablet
- Other variable



Yaba G27

Samples from Myanmar



C14

Met 23.02%

X2 Ca

69.95%

G27 2006 - present, seized in every region of Thailand especially Kanjanaburi Province. (<1% share)



YaBa G17

C12

Met 3.66-13.83% X1,2

Ca 84.12-91.50%

G17 Has been seized before 2003, in every region of Thailand. (<1% share)

Yaba G5



Met 12.53%**X2**
Ca 84.12%

G5 Has been seized before 2003, seized in every region of Thailand (3% share)

YaBa G42



Met 12.53-21.17%
X2, 3 Ca 77.42-
84.12%

Yaba G42 Has been seized before 2003, seized in every region of Thailand (<1% share)

YaBa G20



Met 21.77% X2
Ca 76.04%

YaBa G16



Met 4.48% X2
Ca 71.93%

YaBa G34



Met 15.93% X3
Ca 78.51%

YaBa G20/34/16 Has been seized before 2003, seized in every region of Thailand (<1% share)

YaBa G29



Met 5.42% X2
Ca 85.46%

YaBa G72



Met 19.65% X2
Ca 78.64%

YaBa G65



Met 10.43-21.77% X2,3
Ca 76.20-77.47%

YaBa G66



Met
21.713% X2,3
Ca 74.75%



Met 17.03% X3
Ca 77.10%

YaBa G73

YaBa G29 / G72 / G73 / G65 / G66

Have been seized from 2007 - present in every region of Thailand (<2 % share)

YaBa Logo SY



G 53.1

Met

20.66%X2

Ca 72.58%

Has been seized since 2007 (10 cases) in the western province of Tak and Kanjanaburi Provinces. Kampanfpech Province in the central Thailand and Surathani Province in the south.






non

Met 13.13%

X3 Ca

85.00%

Yaba sample seized in Tachileik, Myanmar in 2009. Supported by CCDAC

No.	Crime scene	Tablet	Meth.	Caff.	Meth. Site	Group	Tablet photo
1	Area near Parsa Temple	5	1.02 %	85.70 %	X ₂	G49	
2	Area near Parsa Temple	5	1.16 %	84.49 %	X ₂	-	
3	Between Kengtung - Tachileik from the 2 Mill. Teb. shipment	5	19.95 %	65.90 %	X ₃	G81	

Sample from Cambodia, YaBa G23



Kampong cham
25/12/2007



Phnom Penh
1/03/2008



Ratanakiri
24/12/2008



Preah Vihear
24/4/2008



Phnom Penh
18/01/2008

G49



Battambang
1/03/2008

24 Aug. 08, arrest of 5
Thais with 1.714 Yaba
tablet in Chiang Rai
Province



G1



รถบรรทุก 10 ล้อ ทะเบียน 70-0455 พะเยา



ซองกลางยาบ้า 1.7 ล้านเม็ด

23 May 08, Arrest of a Thai with 120,000 Yaba tablet in Chiang Rai Province. Trafficking route was CR - Patumthani Province nest to BKK.

G1

Met 22.32-22.73%

Caff 70.69-70.78%





Pseudo ephedrine trafficked out of Thailand

Seizure in Australia

7 October 2007, Australian official seized 2 packages from Thailand.

Put of 11.5 kgs. chemical, the analysis revealed 2.79 kgs. of Pseudo ephedrine.

4 July 2008, Australian Custom in Sydney
seized 850 kgs. of medicine with pseudo
ephedrine from Thailand.



Photo: Australian Customs Service



Photo: Australian Customs Service



Photo: Australian Customs Service

14 August 2008, Australian Custom in Sydney seized 662 kgs. of medicine with the component of pseudo ephedrine. The shipment was concealed in 45 fruit juice boxes from Thailand.



Ephedrine&Caffeine



6.23 mm. dia.

Ephedrine 0.40 %



7.17 mm. dia.

Ephedrine 0.40 %

Caffeine 16.67 %



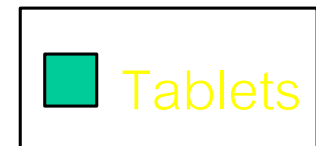
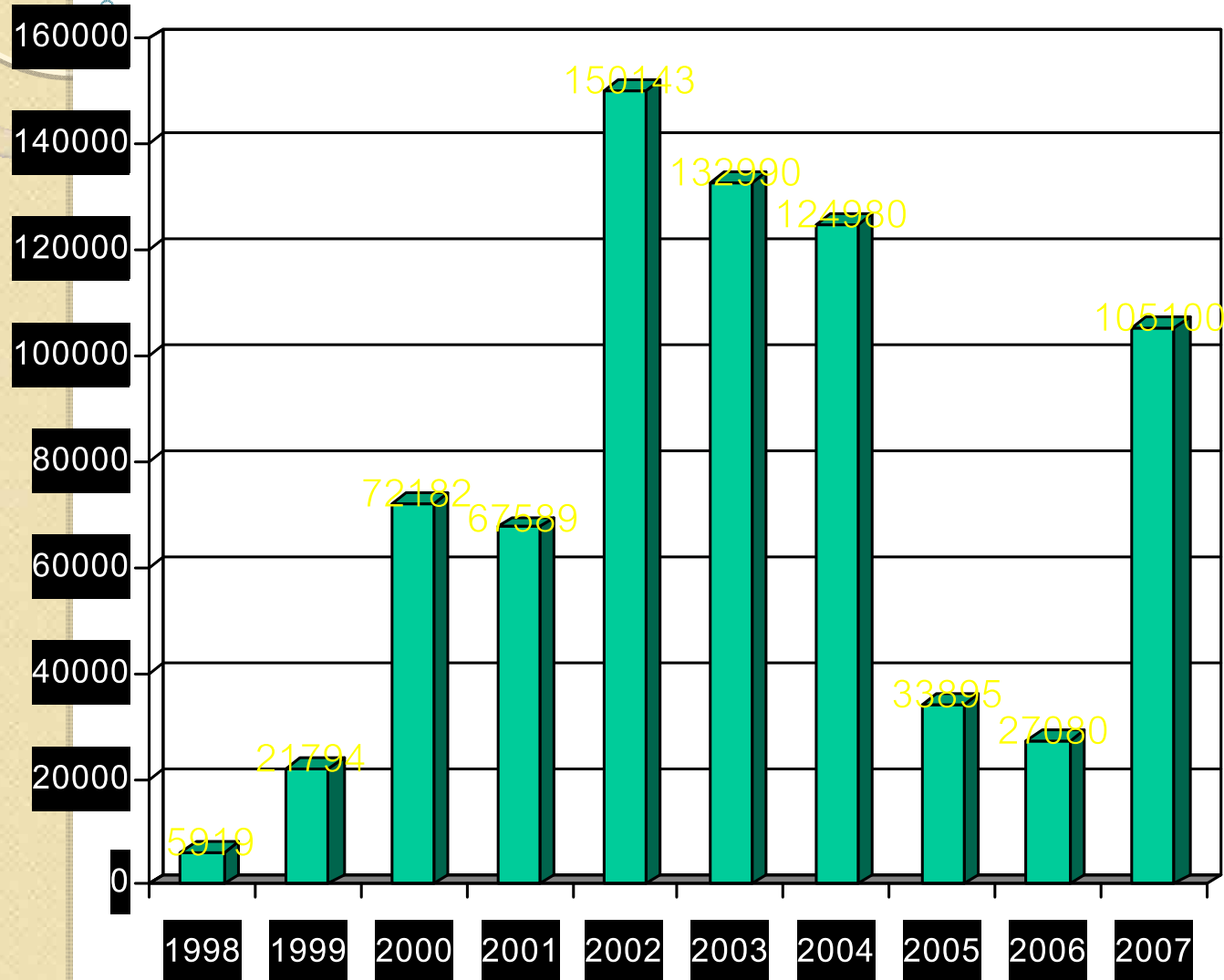
12.27 mm. dia.

Caffeine 1.75%

Never been found in

Thailand

Statistic of Ecstasy Seizures 1998 – 28 Jan 2008





G -
Met 12.53%
X2 Ca
84.12%



G -
Met 18.06% **X3**
Ca 73.66%

Ecstasy



Met 9.92% MDE 47.56%
MDE=Methylenedioxyethyl
amphetamine

2548 at Chiangrai Province

Statistics of all Thailand, 29 July 09

